



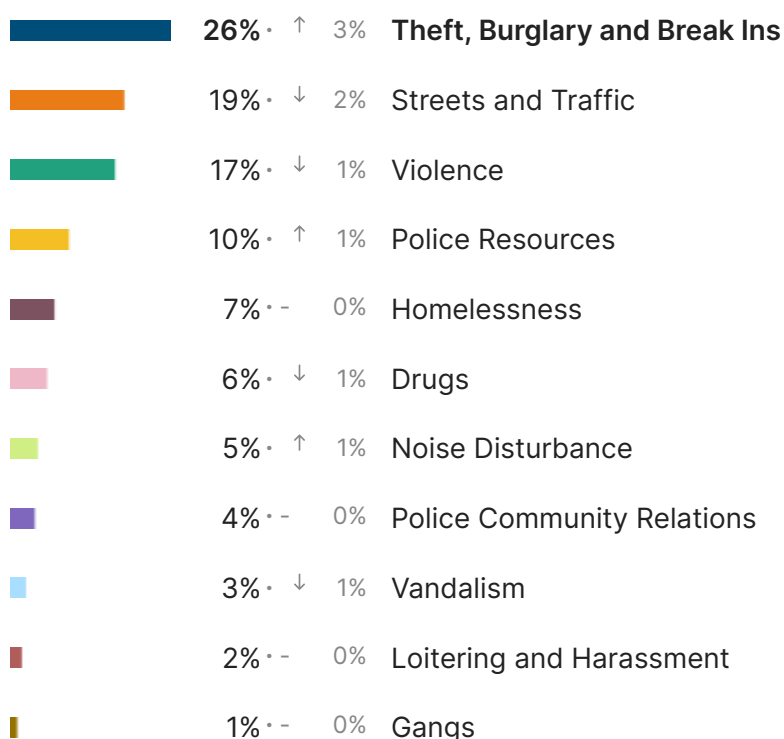
Blockwise - Executive Summary Report

Perception of Safety - 55% of respondents overall felt mostly or completely safe in their neighborhood. 48% of respondents stated there was a place in their local area they did consider unsafe. The main reason people considered this place unsafe (43%) was because "Personally witnessed or been a victim of crime". 78% of respondents reported not being victims of crime in the past 6 months, indicating expanded community perspective access.

The feed provides open text comments identifying general themes and specific issues and locations. Theft, Burglaries, and Break Ins was identified as the primary concern with respondents countywide (311 respondents) and was also the main concern in 5/6 areas. Streets and Traffic was the next largest concern (221) followed by Violence (203). [Click here to visit your site and explore your data.](#)

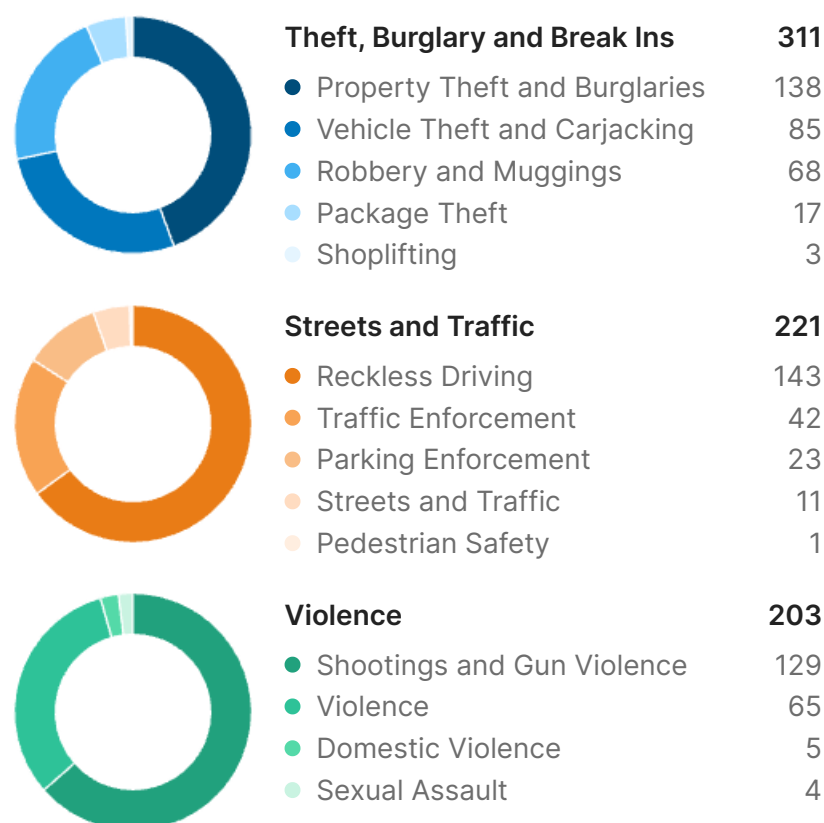
Top concerns

1177 labeled responses out of 1658

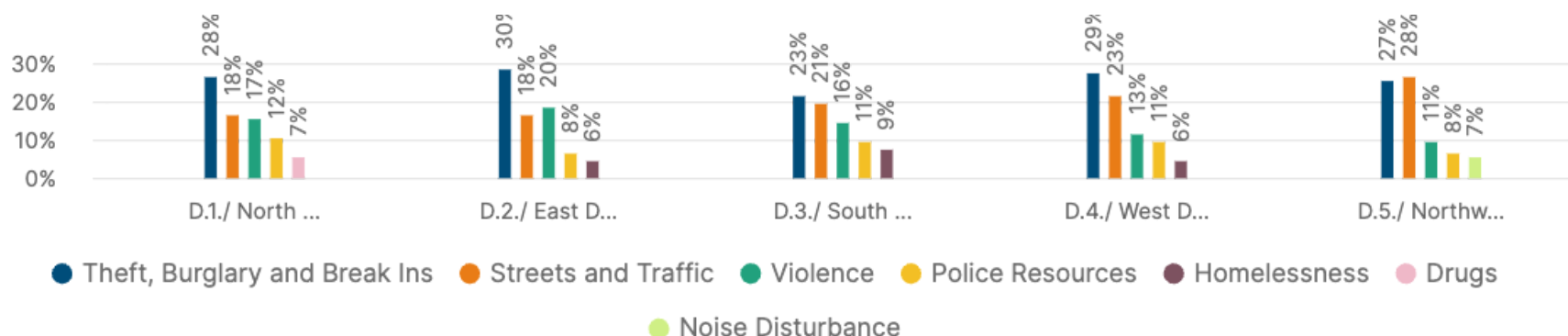


Top 3 concerns breakdown

Number of responses by leading subtopic



Top concerns by area



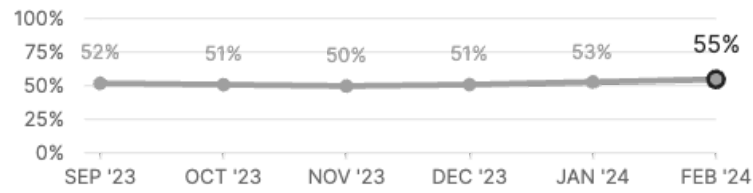
Scores Over Time and by Area

1524 responses (collected by Zencity ad-based distribution, excluding self-distribution)

[Explore Results](#) 

55% Safety

↑ 2% vs previous month

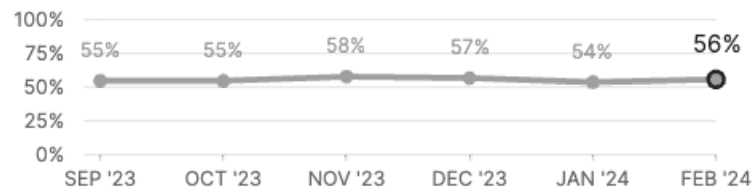


Score by Area



56% Fairness

↑ 2% vs previous month

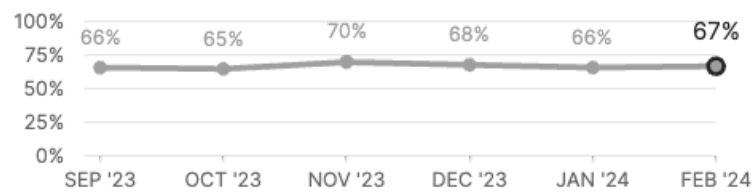


Score by Area



67% Respect

↑ 1% vs previous month

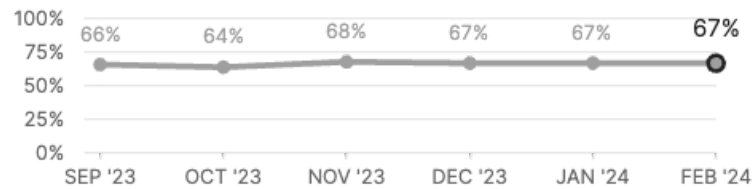


Score by Area



67% Voice

− 0% vs previous month

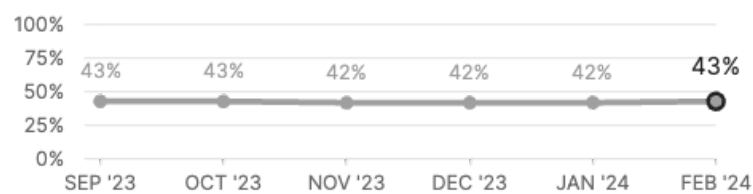


Score by Area



43% Transparency

↑ 1% vs previous month



Score by Area



Small sample sizes can lead to unreliable estimates. Scores for groups under 30 respondents are not shown, and groups with 30 to 49 respondents are marked with an asterisk (*). Use these scores with caution. [Link to Methodology](#).